

Contents lists available at <http://qu.edu.iq>

## Al-Qadisiyah Journal for Engineering Sciences

Journal homepage: <https://qjes.qu.edu.iq>

**Click here, type the title of your paper, Capitalize first letter only**

**First Author**<sup>1</sup>\* , **Second Author**<sup>2</sup> , and **Third Author**<sup>2</sup> 

<sup>1</sup> First affiliation, Address, City and Postcode, Country

<sup>2</sup> Second affiliation, Address, City and Postcode, Country

### ARTICLE INFO

#### Article history:

Received 00 January 0000

Received in revised form 00 January 0000

Accepted 00 January 0000

#### Keywords:

Please add 5 to 7 keyword

Each keyword to start on a new line

Each keyword to start on a new line

Each keyword to start on a new line

Each keyword to start on a new line

Each keyword to start on a new line

### ABSTRACT

Click here and insert your abstract text. Click here and insert your abstract text. Click here and insert your abstract text. Click here and insert your abstract text. . Click here and insert your abstract text. . Click here and insert your abstract text. . Click here and insert your abstract text. . Click here and insert your abstract text. . Click here and insert your abstract text. . Click here and insert your abstract text.

© 2024 University of Al-Qadisiyah. All rights reserved.

## 1. Main text

Here introduces the paper, and put a nomenclature if necessary, in a box with the same font size as the rest of the paper. The paragraphs continue from here and are only separated by headings, subheadings, images, and formulae. The section headings are arranged by numbers, bold and 9 pt. Here follows further instructions for authors.

### 1.1. Structure

Files must be in MS Word only and should be formatted for direct printing, using the CRC MS Word provided. Figures and tables should be embedded and not supplied separately.

Please make sure that you use as much as possible normal fonts in your documents. Special fonts, such as fonts used in the Far East (Japanese,

Chinese, Korean, etc.) may cause problems during processing. To avoid unnecessary errors, you are strongly advised to use the 'spellchecker' function of MS Word.

Follow this order when typing manuscripts: Title, Authors, Affiliations, Abstract, Keywords, Main text (including figures and tables), References.

Bulleted lists may be included and should look like this:

- First point
- Second point

\* Corresponding author.

E-mail address: [author@institute.xxx](mailto:author@institute.xxx) (Author name)

<https://doi.org/10.30772/qjes.00000.0000>

2411-7773/© 2024 University of Al-Qadisiyah. All rights reserved.



This work is licensed under a [Creative Commons Attribution 4.0 International License](https://creativecommons.org/licenses/by/4.0/).

**Nomenclature:**

$C_p$	specific heat ( $\text{J kg}^{-1} \text{K}^{-1}$ )
$g$	gravitational acceleration ( $\text{m s}^{-2}$ )
$k$	thermal conductivity ( $\text{W m}^{-1} \text{K}^{-1}$ )
$kr$	thermal conductivity ratio, $kr = kw/kf$
$L$	length of the enclosure (m)
$L_b$	baffle length (m)
$Nu_l$	local Nusselt number along with the heat source
$Nu$	average Nusselt number
$p$	pressure ( $\text{kg m}^{-1} \text{s}^{-2}$ )
$P$	non-dimensional pressure
$Pr$	Prandtl number
$Ra$	Rayleigh number
$T$	dimensional temperature
$U$	non-dimensional velocity component X-direction
$V$	non-dimensional velocity components Y-direction
$w_b$	baffle width (m)
$X$	non-dimensional X-coordinates
$Y$	non-dimensional Y-coordinates

*Greek symbols*

$\alpha$	thermal diffusivity ( $\text{m}^2 \text{s}^{-1}$ )
$\beta$	thermal expansion coefficient ( $\text{K}^{-1}$ )
$\phi$	solid volume fraction
$\Theta$	dimensionless temperature
$\emptyset$	baffle inclination angle
$\mu$	dynamic viscosity ( $\text{kg m}^{-1} \text{s}^{-1}$ )

*Subscripts*

av	average
b	baffle
c	cold
f	fluid (pure water)
h	hot
nf	nanofluid
p	nanoparticle
s	solid
w	wall

Ensure that you return to the ‘QJES-TEXT’ style, the style that you will mainly be using for large blocks of text, when you have completed your bulleted list.

Please do not alter the formatting and style layouts which have been set up in this template document. As indicated in the template, papers should be prepared in double column format suitable for direct printing onto paper with trim size 210 x 280 mm. Do not number pages on the front, as page numbers will be added separately for the preprints and the Proceedings. Leave a line clear between paragraphs. All the required style templates are provided in the file “MS Word Template” with the appropriate name supplied, e.g., choose 1. QJES 1st-order-head for your first order heading text, QJES-abstract-text for the abstract text etc.

**1.2. Tables**

All tables should be numbered with Arabic numerals. Every table should have a caption. Headings should be placed above tables, center justified. Only horizontal lines should be used within a table, to distinguish the column headings from the body of the table, and immediately above and below the table. Tables must be embedded into the text and not supplied separately. Below is an example which the authors may find useful.

**Table 1.** An example of a table

An example of a column heading	Column A (t)	Column B (t)
And an entry	1	2
And another entry	3	4
And another entry	5	6

**1.3. Construction of references**

All publications cited in the text should be presented in a list of references following the text of the manuscript. In the text make references using a number in square brackets on the line. Some examples:

Chamkha et. al [1] studied .....

This result was later contradicted by Al-Farhany and Turan [2]. Negotiation research spans many disciplines [3]. This effect has been widely studied [1-3, 7].

The full reference should be given in a numerical list at the end of the paper. Some examples of how your references should be listed are given at the end

of this template in the ‘References’ section, which will allow you to assemble your reference list according to the correct format and font size.

**1.4. Section headings**

Section headings should be left justified, bold, with the first letter capitalized and numbered consecutively, starting with the Introduction. Sub-section headings should be in capital and lower-case, numbered 1.1, 1.2, etc., and left justified, with second and subsequent lines indented. All headings should have a minimum of three text lines after them before a page or column break. Ensure the text area is not blank except for the last page.

**1.5. General guidelines for the preparation of your text**

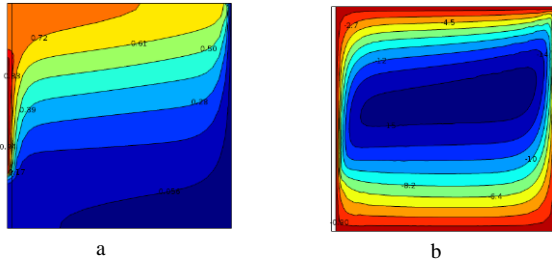
Avoid hyphenation at the end of a line. Symbols denoting vectors and matrices should be indicated in bold type. Scalar variable names should normally be expressed using italics. Weights and measures should be expressed in SI units. All non-standard abbreviations or symbols must be defined when first mentioned, or a glossary provided.

**2. Illustrations**

All figures should be numbered with Arabic numerals (1,2, 3,...). Every figure should have a caption. All photographs, schemas, graphs, and diagrams are to be referred to as figures. Line drawings should be good quality scans or true electronic output. Low-quality scans are not acceptable. Figures must be embedded into the text and not supplied separately. In MS word input the figures must be properly coded. Preferred format of figures is PNG, JPEG, GIF etc. Lettering and symbols should be clearly defined either in the caption or in a legend provided as part of the figure. Figures should be placed at the top or bottom of a page wherever possible, as close as possible to the first reference to them in the paper. Please ensure that all the figures are of 300 DPI resolutions as this will facilitate good output.

The figure number and caption should be typed below the illustration in 8 pt and centered justified [*Note:* one-line captions of length less than column

width (or full typesetting width or oblong) centered]. For more guidelines and information to help you submit high quality artwork please visit: <https://qjes.qu.edu.iq/>. Artwork has no text along the side of it in the main body of the text. However, if two images fit next to each other, these may be placed next to each other to save space. For example, see Fig. 1.



**Figure 1.** (a) first picture; (b) second picture

### 3. Equations

Equations and formulae should be typed in Equation tool (i.e Mathtype program) and numbered consecutively with Arabic numerals in parentheses on the right-hand side of the page (if referred to explicitly in the text). They should also be separated from the surrounding text by one space.

$$\rho_{nf} \left( u \frac{\partial u}{\partial x} + v \frac{\partial u}{\partial y} \right) = - \frac{\partial p}{\partial x} + \mu_{nf} \left( \frac{\partial^2 u}{\partial x^2} + \frac{\partial^2 u}{\partial y^2} \right) \quad (1)$$

### 4. Conclusions

The research paper must have a conclusion part that summarizes the outcome of this work.

#### Authors' contribution

All authors contributed equally to the preparation of this article.

#### Declaration of competing interest

The authors declare no conflicts of interest.

#### Funding source

This study didn't receive any specific funds.

#### Data availability

The data that support the findings of this study are available from the corresponding author upon reasonable request.

#### Acknowledgments

The authors would like to acknowledge .....

### REFERENCES

- [1] K. Al-Farhany, A. Turan, Numerical study of double diffusive natural convective heat and mass transfer in an inclined rectangular cavity filled with porous medium, *International Communications in Heat and Mass Transfer*, 39(2) (2012) 174-181. <https://doi.org/10.1016/j.icheatmasstransfer.2011.11.014>

- [2] Fahem, A., Kidane, A. & Sutton, M. Loading Rate Effects for Flaws Undergoing Mixed-Mode I/III Fracture. *Exp Mech* 61, 1291–1307 (2021). <https://doi.org/10.1007/s11340-021-00739-0>.
- [3] A.J. Chamkha, M.A. Ismael, Conjugate Heat Transfer in a Porous Cavity Heated by a Triangular Thick Wall, *Numerical Heat Transfer, Part A: Applications*, 63(2) (2013) 144-158. <https://doi.org/10.1080/10407782.2012.724327>